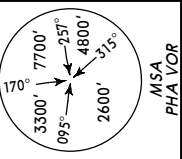


LCPH/PFO
 PAFOS INTL

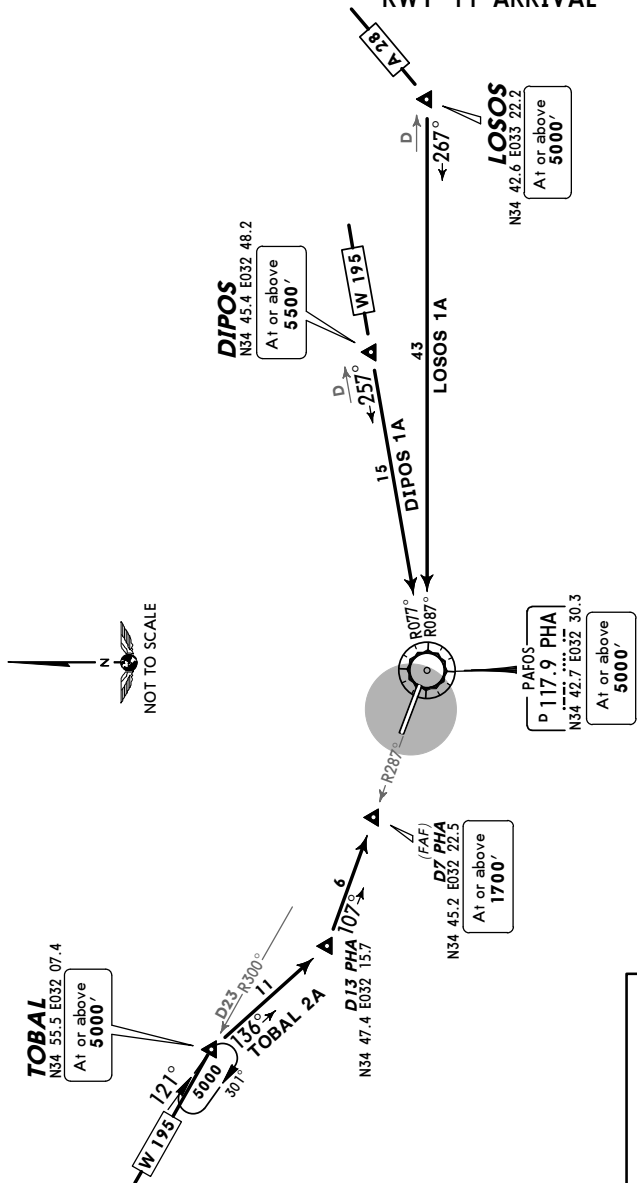
JEPPesen
 27 FEB 09 (10-2)

PAFOS, CYPRUS
 STAR

Apt Elev 41'
 Alt Set: hPa
 Trans level: By ATC Trans alt: 8000'

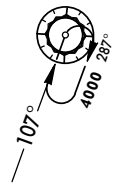


DIPOS ONE ALFA (DIPOS 1A) [DIPO1A]
 LOSOS ONE ALFA (LOSOS 1A) [LOSO1A]
 RWYS 11, 29 ARRIVALS
 TOBAL TWO ALFA (TOBAL 2A) [TOBA2A]
 RWY 11 ARRIVAL



NOT TO SCALE

HOLDING OVER PHA

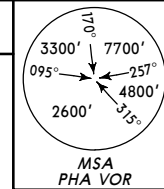


LCPH/PFO
 PAFOS INTL

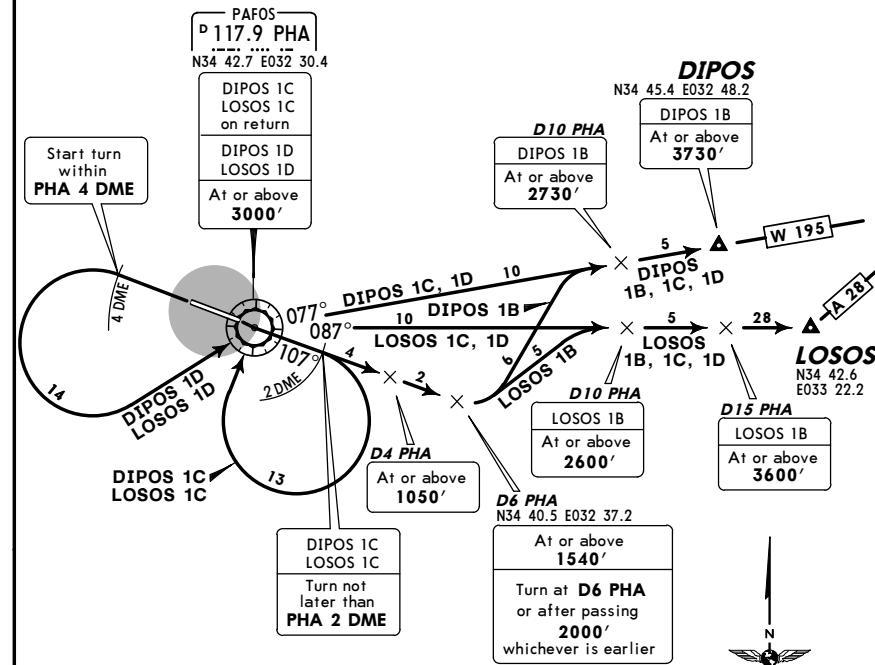
JEPPesen
 30 MAR 07 (10-3)

PAFOS, CYPRUS
 SID

Apt Elev 41'
 Trans level: By ATC Trans alt: 8000'



DIPOS ONE BRAVO (DIPOS 1B) [DIPO1B]
 DIPOS ONE CHARLIE (DIPOS 1C) [DIPO1C]
 DIPOS ONE DELTA (DIPOS 1D) [DIPO1D]
 LOSOS ONE BRAVO (LOSOS 1B) [LOSO1B]
 LOSOS ONE CHARLIE (LOSOS 1C) [LOSO1C]
 LOSOS ONE DELTA (LOSOS 1D) [LOSO1D]
 RWYS 11, 29 DEPARTURES



NOT TO SCALE

DIPOS 1B, LOSOS 1B

These SIDs require a minimum climb gradient of 273' per NM (4.5%) until passing 2500'.

Gnd speed-KT	75	100	150	200	250	300
273' per NM	342	456	684	911	1139	1367

SID	RWY	ROUTING
DIPOS 1B	11	Climb on PHA R-107, at D6 PHA or after passing 2000', whichever is earlier, turn LEFT, intercept PHA R-077 within D10 PHA to DIPOS, climbing to cleared level, then along airway W 195.
DIPOS 1C		Turn RIGHT not later than PHA 2 DME to PHA, PHA R-077 to DIPOS, climbing to cleared level, then along airway W 195.
DIPOS 1D	29	Turn LEFT within PHA 4 DME to PHA, PHA R-077 to DIPOS, climbing to cleared level, then along airway W 195.
LOSOS 1B	11	Climb on PHA R-107, at D6 PHA or after passing 2000', whichever is earlier, turn LEFT, intercept PHA R-087 within D10 PHA to LOSOS, climbing to cleared level, then along airway A 28.
LOSOS 1C		Turn RIGHT not later than PHA 2 DME to PHA, PHA R-087 to LOSOS, climbing to cleared level, then along airway A 28.
LOSOS 1D	29	Turn LEFT within PHA 4 DME to PHA, PHA R-087 to LOSOS, climbing to cleared level, then along airway A 28.

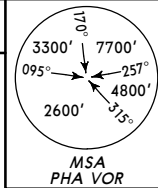
LCPH/PFO
 PAFOS INTL

JEPPESEN
 30 MAR 07 (10-3A)

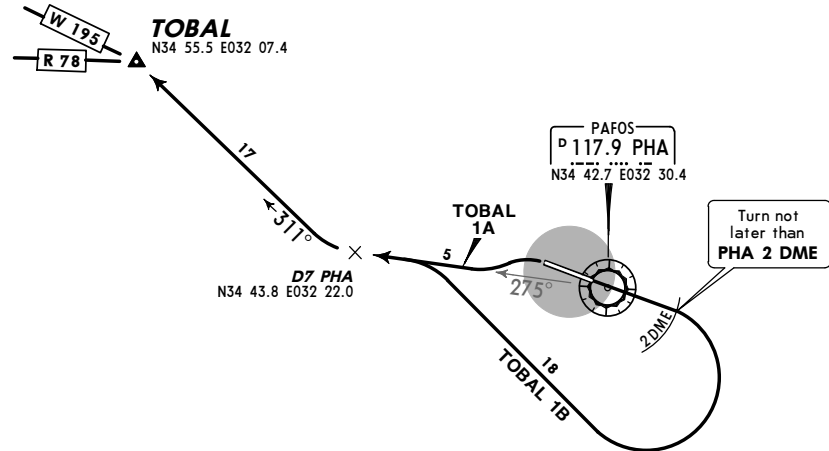
PAFOS, CYPRUS

SID

Apt Elev 41'
 Trans level: By ATC Trans alt: 8000'



TOBAL ONE ALFA (TOBAL 1A) [TOBA1A]
TOBAL ONE BRAVO (TOBAL 1B) [TOBA1B]
 RWYS 29, 11 DEPARTURES



SID	RWY	ROUTING
TOBAL 1A	29	Turn LEFT, intercept PHA R-275 to D7 PHA, turn RIGHT, 311° track to TOBAL, then along airway W 195 .
TOBAL 1B	11	Turn RIGHT not later than PHA 2 DME, intercept PHA R-275 within D7 PHA, at D7 PHA turn RIGHT, 311° track to TOBAL, then along airways W 195 / R 78 .

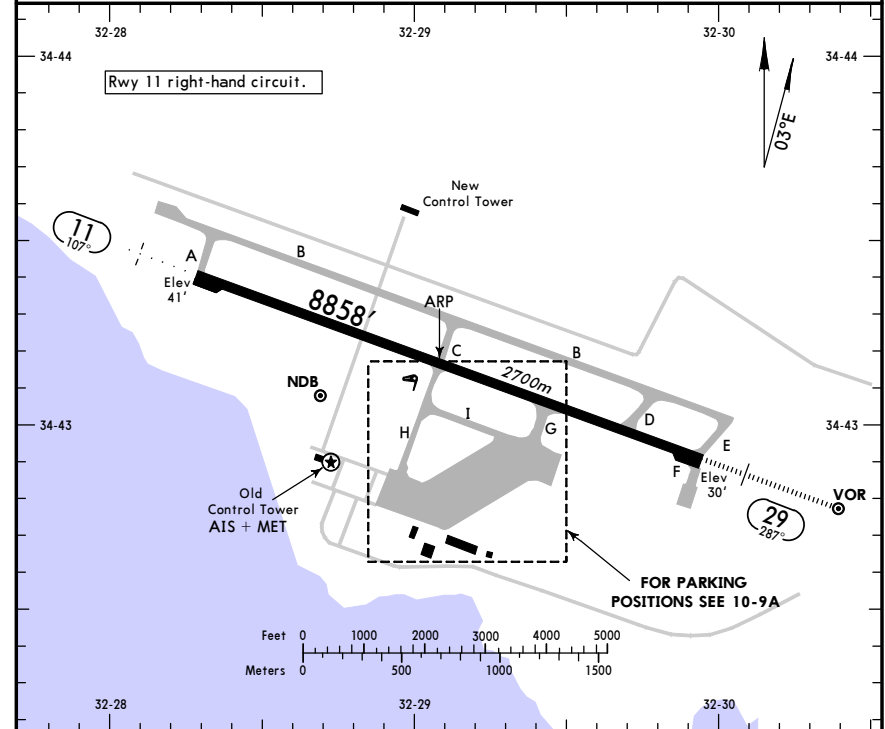
LCPH/PFO
 Apt Elev 41'
 290.3°/1.2 from PHA 117.9

JEPPESEN
 3 OCT 03 (10-9)

PAFOS, CYPRUS
 PAFOS INTL
 N34 43.2 E032 29.1

PAFOS Tower

119.9



ADDITIONAL RUNWAY INFORMATION

RWY	USABLE LENGTHS			WIDTH
	LANDING BEYOND		TAKE-OFF	
	Threshold	Glide Slope		
11	HIRL	HIALS	PAPI (angle 3.0°)	148'
29	HIRL	HIALS	PAPI-L (angle 3.0°)	45m

JAR-OPS

TAKE-OFF 1

	LVP must be in Force	All Rwys	
	RCLM (DAY only) or RL	RCLM (DAY only) or RL	NIL (DAY only)
A			
B	250m	400m	500m
C			
D	300m		

1 Operators applying U.S. Ops Specs: CL required below 300m.

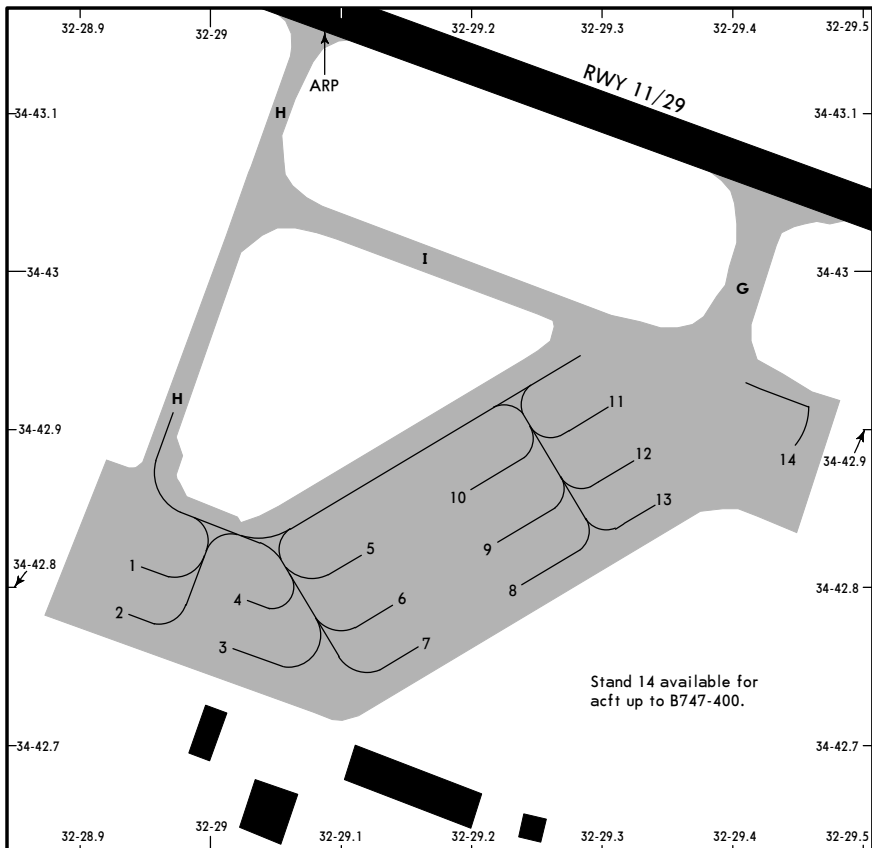
NOISE ABATEMENT PROCEDURE

Westbound aircraft: After take-off rwy 29 climb STRAIGHT AHEAD and, when practicable, turn LEFT onto track 275° to 4000'(3959') or D8.0 PHA and continue.

LCPH/PFO

JEPPESEN
 3 OCT 03 (10-9A)

PAFOS, CYPRUS
 PAFOS INTL



Stand 14 available for acft up to B747-400.

INS COORDINATES

STAND No.	COORDINATES	STAND No.	COORDINATES
1, 2	N34 42.8 E032 28.9	11, 12	N34 42.9 E032 29.3
3, 4	N34 42.8 E032 29.0	13	N34 42.8 E032 29.3
5, 6	N34 42.8 E032 29.1	14	N34 42.9 E032 29.4
7 thru 9	N34 42.8 E032 29.2		
10	N34 42.9 E032 29.2		

LCPH
 PAFOS INTL

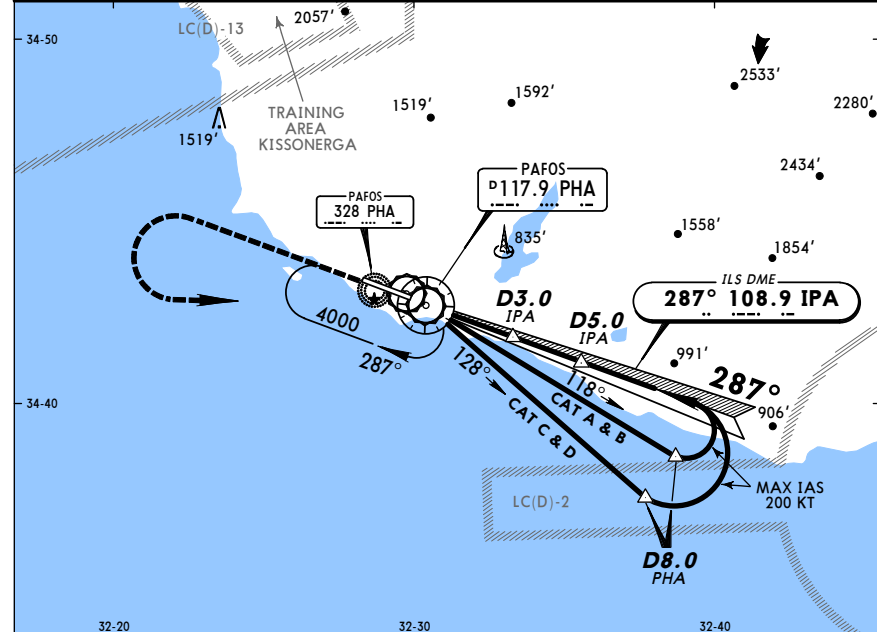
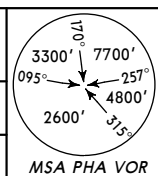
JEPPESEN
 13 JUL 01 (11-1)

PAFOS, CYPRUS
 VOR ILS DME Rwy 29

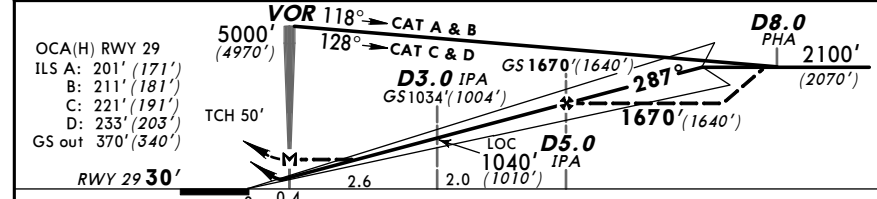
PAFOS Approach				PAFOS Tower	
LOC	Final Apch Crs	GS	ILS DA(H)	Apt Elev	41'
IPA	287°	D5.0 IPA	Refer to Minimums	Rwy	30'
108.9		1670' (1640')			

MISSED APCH: Climb STRAIGHT AHEAD to 2500', then turn LEFT and return to VOR at 4000'.

Alt Set: hPa Rwy Elev: 1 hPa Trans level: By ATC Trans alt: 8000' (7970')
 ILS DME reads zero at rwy 29 threshold.



LOC	IPA DME	2.0	3.0	4.0	5.0
(GS out)	ALTITUDE (HAT)	720' (690')	1040' (1010')	1360' (1330')	1670' (1640')

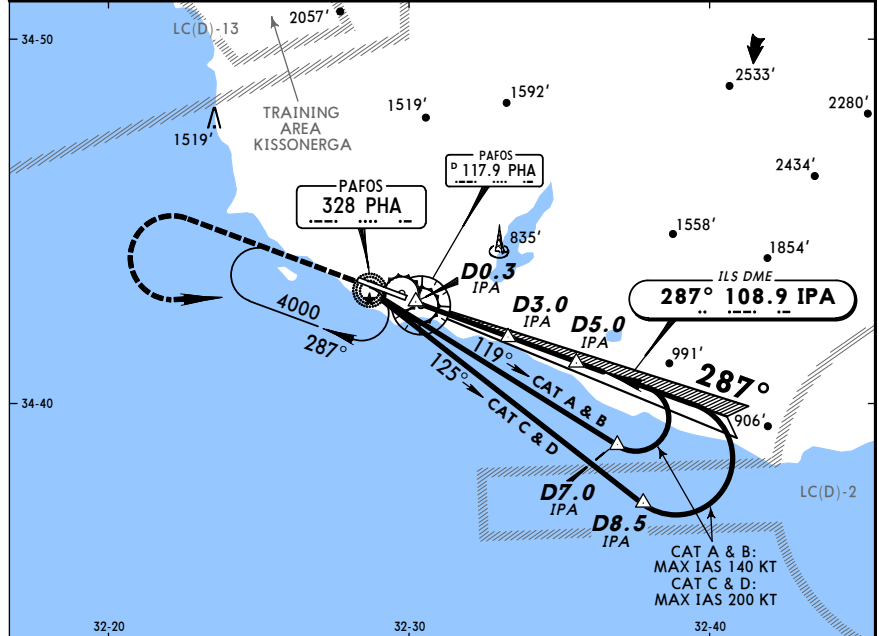


Gnd speed-Kts	70	90	100	120	140	160	HIALS	2500'
ILS GS 3.00° or	377	485	539	647	755	862	PAPI	
LOC Desc Grad 5.2%								

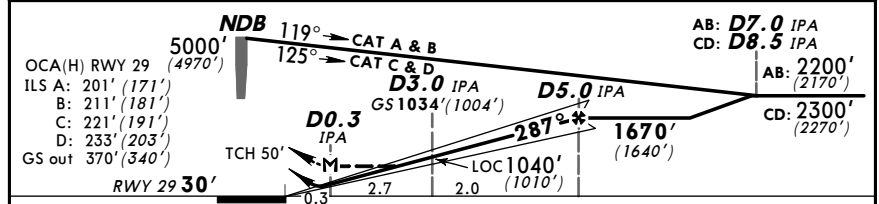
JAR-OPS STRAIGHT-IN LANDING RWY 29				CIRCLE-TO-LAND	
ILS		LOC (GS out)		Not authorized North of airport between 310° & 080°	
DA(H)	ABC: 230' (200') D: 233' (203')	MDA(H) 370' (340')		Max Kts.	VIS
FULL	ALS out	ALS out	ALS out		
A		RVR 1200m	RVR 1500m	100	450' (409') 1500m
B		RVR 1300m	RVR 1500m	135	550' (509') 1600m
C	RVR 700m	RVR 1400m	RVR 1800m	180	860' (819') 2400m
D	RVR 1000m	RVR 1600m	RVR 2000m	205	1240' (1199') 3600m

LCPH PAFOS INTL **JEPPESEN** **PAFOS, CYPRUS**
 13 JUL 01 (11-2) **NDB ILS DMÉ Rwy 29**

PAFOS Approach			PAFOS Tower		
120.8			119.9		
LOC IPA 108.9	Final Apch Crs 287°	GS D3.0 IPA 1034' (1004')	ILS DA(H) Refer to Minimums	Apt Elev 41'	RWY 30'
MISSED APCH: Climb STRAIGHT AHEAD to 2500', then turn LEFT and return to NDB at 4000'.					
Alt Set: hPa Rwy Elev: 1 hPa Trans level: By ATC Trans alt: 8000' (7970') ILS DME reads zero at rwy 29 threshold.					



LOC (GS out)	IPA DME	2.0	3.0	4.0	5.0
	ALTITUDE (HAT)	720' (690')	1040' (1010')	1360' (1330')	1670' (1640')

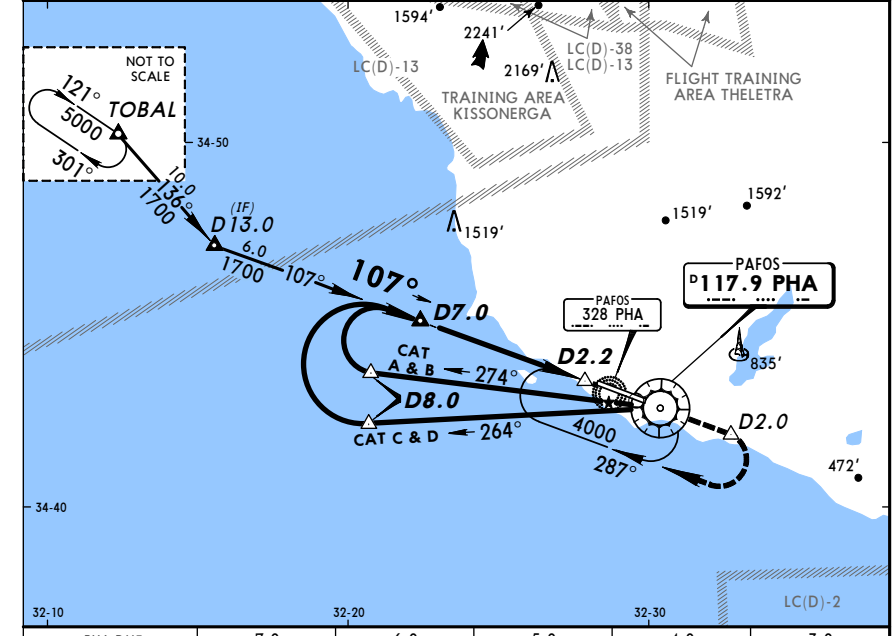


Gnd speed-Kts	70	90	100	120	140	160	HIALS PAPI 2500'
ILS GS 3.00° or	377	485	539	647	755	862	
LOC Desc Grad 5.2%							

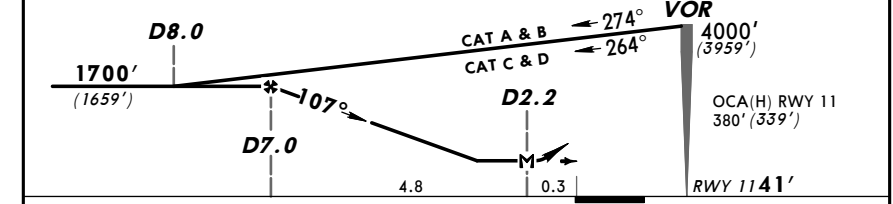
JAR-OPS STRAIGHT-IN LANDING RWY 29				CIRCLE-TO-LAND			
ILS DA(H) ABC: 230' (200') D: 233' (203')				Not authorized North of airport between 310° & 080°			
FULL		ALS out		MDA(H) 370' (340')		ALS out	
A			RVR 1200m	RVR 1500m	100	450' (409')	1500m
B			RVR 1300m	RVR 1500m	135	550' (509')	1600m
C	RVR 700m	RVR 1000m	RVR 1400m	RVR 1800m	180	860' (819')	2400m
D			RVR 1600m	RVR 2000m	205	1240' (1199')	3600m

LCPH PAFOS INTL **JEPPESEN** **PAFOS, CYPRUS**
 13 JUL 01 (13-1) **VOR DMÉ Rwy 11**

PAFOS Approach			PAFOS Tower		
120.8			119.9		
VOR PHA 117.9	Final Apch Crs 107°	Minimum Alt D7.0 1700' (1659')	MDA(H) 380' (339')	Apt Elev 41'	RWY 41'
MISSED APCH: Not later than D2.0 after VOR climbing turn RIGHT to join the holding outbound leg and return to VOR at 4000'.					
Alt Set: hPa Rwy Elev: 2 hPa Trans level: By ATC Trans alt: 8000' (7959')					



PHA DME	7.0	6.0	5.0	4.0	3.0
ALTITUDE (HAT)	1700' (1659')	1390' (1349')	1080' (1039')	770' (729')	460' (419')



Gnd speed-Kts	70	90	100	120	140	160	HIALS PAPI Refer to Missed apch above
Descent Gradient 5.1%	362	465	516	620	723	826	
MAP at D2.2							

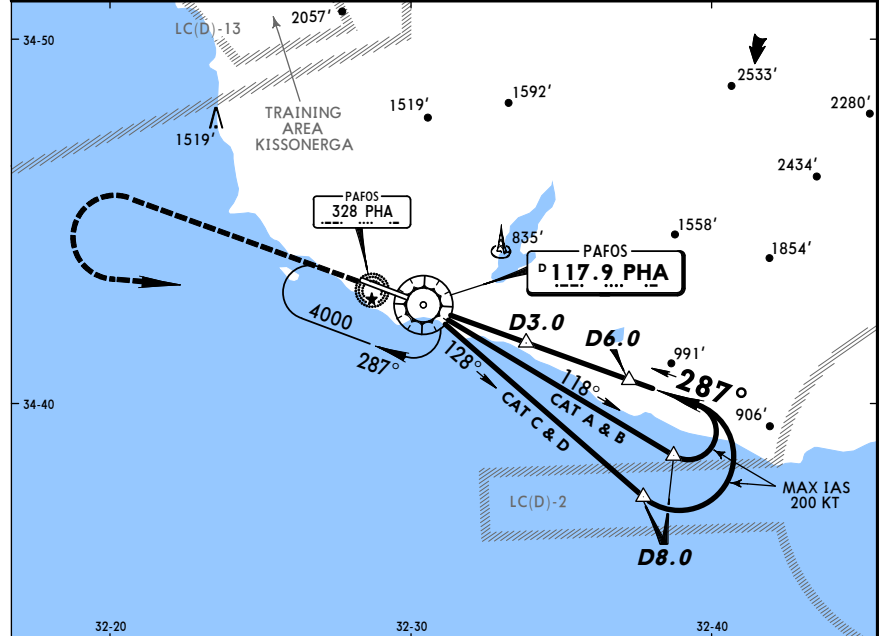
JAR-OPS STRAIGHT-IN LANDING RWY 11				CIRCLE-TO-LAND			
MDA(H) 380' (339')				Not authorized North of airport between 310° & 080°			
		ALS out		Max Kts		MDA(H) VIS	
A	RVR 1300m		RVR 1500m	100	450' (409')	1500m	
B	RVR 1400m		RVR 1500m	135	550' (509')	1600m	
C	RVR 1600m		RVR 1800m	180	860' (819')	2400m	
D	RVR 1800m		RVR 2000m	205	1240' (1199')	3600m	

LCPH
PAFOS INTL

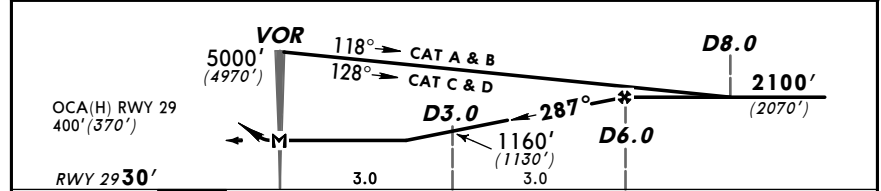
JEPPESEN
 13 JUL 01 (13-2)

PAFOS, CYPRUS
VOR DMÉ Rwy 29

PAFOS Approach			PAFOS Tower		
120.8			119.9		
VOR PHA 117.9	Final Apt Crs 287°	Minimum Alt D6.0 2100' (2070')	MDA(H) 400' (370')	Apt Elev 41'	RWY 30'
MISSED APCH: Climb STRAIGHT AHEAD to 2500', then turn LEFT and return to VOR at 4000'.					
Alt Set: hPa Rwy Elev: 1 hPa Trans level: By ATC Trans alt: 8000'(7970')				MSA PHA VOR	



	32-20	32-30	32-40
PHA DME	1.0	2.0	3.0
ALTITUDE (HAT)	520' (490')	840' (810')	1160' (1130')
			1480' (1450')
			1790' (1760')



Gnd speed-Kts	70	90	100	120	140	160
Descent Gradient 5.2%	369	474	527	632	737	843
MAP at VOR						

JAR-OPS STRAIGHT-IN LANDING RWY 29			CIRCLE-TO-LAND		
MDA(H) 400' (370')			Not authorized North of airport between 310° & 080°		
	ALS out	Max Kts	MDA(H)	VIS	
A	RVR 1200m	100	450' (409')	1500m	
B	RVR 1300m	135	550' (509')	1600m	
C	RVR 1400m	180	860' (819')	2400m	
D	RVR 1600m	205	1240' (1199')	3600m	